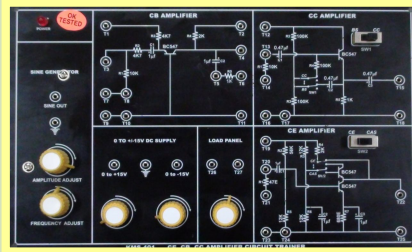
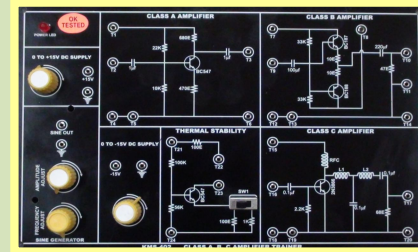


KMS-401 CE, CB, CC Amplifier Circuit Trainer



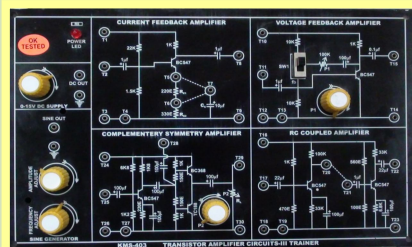
- Output Waveform - Sine
- Frequency and Amplitude Adjustment is provided using Potentiometers
- Two Selector Switch is SW1 & SW2.
- One Load Panel of Potentiometer is 10K Ω
- One LED indicator to indicate Power input.
- On-board Circuits
 - CB Amplifier
 - CC Amplifier
 - CE Amplifier
- Variable DC power supply : 0 to ± 15 V
- Fixed DC Power Supply: ± 12 V
- All interconnections are made using 2mm banana Patch cords.
- Bare board Tested Glass Epoxy PCB is used.
- Set of 2mm Patch cords for interconnections

KMS-402 CLASS A, B, C AMPLIFIER TRAINER



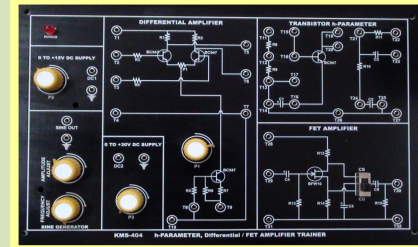
- Output Waveform - Sine
- Frequency and Amplitude Adjustment is provided using Potentiometers
- One Selector Switch is SW1.
- One LED indicator to indicate Power input.
- On-board Circuits
 - Class A Amplifier
 - Class B Amplifier
 - Class C Amplifier
 - Thermal Stability
- Variable DC power supply : 0 to + 15 V/150mA
- Variable DC power supply : 0 to - 15 V/150mA
- All interconnections are made using 2mm banana Patch cords.
- Bare board Tested Glass Epoxy PCB is used.
- Set of 2mm Patch cords for interconnections

KMS-403 TRANSISTOR AMPLIFIER CIRCUITS - III



- Output Waveform - Sine
- Frequency and Amplitude Adjustment is provided using Potentiometers
- Two Potentiometer is P1 & P2.
- One Selector Switch is SW1.
- One LED indicator to indicate Power input.
- On-board Circuits
 - Current Feedback Amplifier
 - Voltage Feedback Amplifier
 - Complimentary Symmetry Amplifier
 - RC Coupled Amplifier
- Variable DC power supply : 0 to + 15 V/150mA
- All interconnections are made using 2mm banana Patch cords.
- Bare board Tested Glass Epoxy PCB is used.
- Set of 2mm Patch cords for interconnections

KMS-404 h-PARAMETER, Differential/ FET AMPLIFIER TRAINER



- Output Waveform - Sine
- Frequency and Amplitude Adjustment is provided using Potentiometers
- One potentiometer is P1.
- One Selector Switch.
- One LED indicator to indicate Power input.
- On-board Circuits
 - Differential Amplifier
 - Transistor h-Parameter
 - FET Amplifier
- Variable DC power supply : 0 to +15 V
- Variable DC power supply : 0 to +30 V
- All interconnections are made using 2mm banana Patch cords.
- Bare board Tested Glass Epoxy PCB is used.
- Set of 2mm Patch cords for interconnections