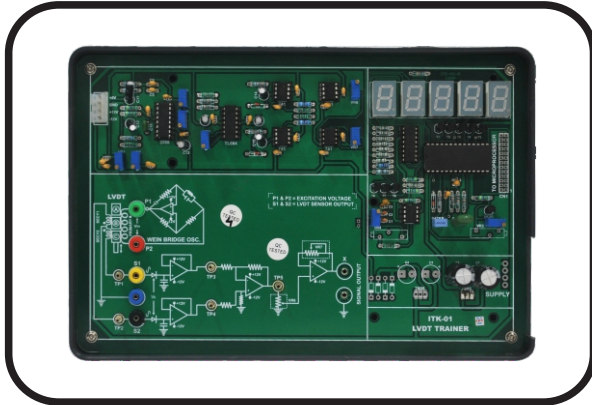


ITK - 01

DISPLACEMENT MEASUREMENT USING LVDT TRAINER



Features

- **Transducer**
 - LVDT Transducer with transparent enclosure.
 - Displacement of $\pm 5\text{mm}$
 - Primary Excitation voltage of Sine wave 1Vp-p
- **Measurement Options**
 - On-board Digital Panel Meter provided
 - Output available on 2mm Banana sockets for Monitoring
 - Screw Gauge for reference displacement reading
- **Onboard Features**
 - Provided with excitation voltage
 - Onboard Instrumentation Amplifier provided
 - Block Description Screen printed on glassy epoxy PCB.
 - Facility to Interface with PC (Optional)
 - Facility to Interface with 8085/86/51 kit(Optional).
- **Interconnections**
 - All interconnections are made using 2mm banana Patch cords.
- Test points are provided to analyze signals at various points.
- All ICS are mounted on IC Sockets.
- Bare board Tested Glass Epoxy SMOBC PCB is used.
- In-Built Power Supply of $+5\text{V}/1.5\text{A}$, $\pm 12\text{V}/250\text{mA}$ with Power ON indication
- Attractive ABS Plastic enclosures.
- Set of 2mm Patch cords for interconnections
- User's Manual with sample experimental programs

ITK - 02

PRESURE MEASUREMENT WITH PRESSURE GENERATOR



Features

- **Transducer**
 - Resistive Pressure Transducer with transparent enclosure.
 - Pressure of $0-300\text{mm hg} / 6\text{psi}$
 - Primary Excitation voltage of 5V DC
- **Measurement Options**
 - On-board Digital Panel Meter provided
 - Output available on 2mm Banana sockets for Monitoring
 - Pressure generation and Monitor using a Mercury gauge manometer
- **Onboard Features**
 - Provided with excitation voltage
 - Onboard Instrumentation Amplifier provided
 - Block Description Screen printed on glassy epoxy PCB
 - Facility to Interface with PC (Optional)
 - Facility to Interface with 8085/86/51 kit(Optional)
- **Interconnections**
 - All interconnections are made using 2mm banana Patch cords.
- Test points are provided to analyze signals at various points.
- All ICS are mounted on IC Sockets.
- Bare board Tested Glass Epoxy SMOBC PCB is used.
- In-Built Power Supply of $+5\text{V}/1.5\text{A}$, $\pm 12\text{V}/250\text{mA}$ with Power ON indication
- Attractive ABS Plastic enclosures.
- Set of 2mm Patch cords for interconnections
- User's Manual with sample experimental programs

Note : Specifications & Photos can be altered without notice in our constant efforts for improvement.