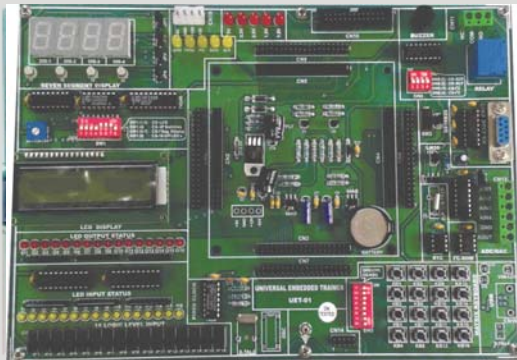


## UET-01 UNIVERSAL EMBEDDED KIT



UET-ARM



UET-PIC



UET-MCU



UET-AVR

**UET-01** is a single board Embedded Kit based on ARM, AVR, 89CXX, PIC Microcontrollers for any Embedded applications

### Feature

- Daughter CPU Boards for
  - Philips 89C61X2 Microcontroller.
  - Microchip PIC 16F877A Microcontroller.
  - Microchip PIC 18F452 Microcontroller.
  - Philips ARM LPC 2148 Microcontroller.
  - ATMEL Atmega32 Microcontroller.
- ISP Programming facility for all Microcontrollers.

### ONBOARD APPLICATION

#### For ARM, PIC, AVR, 89CXX Module.

- 16 LED's to display Digital Output.
- 16 Switches to give Digital Input indicated by LED's.
- 16x2 Alphanumeric LCD backlight display.
- 4x4 Matrix Keyboard.
- Miniature Buzzer.
- 12V SPDT Relay.
- 4 digit seven segment displays.
- I2C compatible:
  - 24C512 EEPROM (64KB).
  - DS1307 RTC with suitable battery.
  - 4Ch. 8bit ADC & 1Ch. 8 bit DAC using PCF8591.
- Temperature sensor interface using Lm35.
- Temperature sensor interface using DS18B20.
- 24 I/O Lines Provided on a 26 pin FRC Connector for external interface.
- On board supply +/- 12V, 5V, 3.3V, 2.5V, 1.5V & 1.2V is provided.
- Supply Input Voltage: 230V AC.
- All ICS are mounted on IC Sockets.
- Bare board Tested Glass Epoxy SMOBC PCB is used.
- Attractive ABS Plastic enclosures.
- User's Manual with 'C' source code sample programs for all on board applications.

### UET-ARM ARM Piggy-bag module

#### Feature

- CPU: Philips LPC2148 operating @ 12MHz.
- 16 bit / 32bit ARM7 TDMI-S Microcontroller.
- On-chip 512KB Flash memory and 40KB RAM.
- On-chip 14 Ch. 10 bit ADC and 1 Ch. 10bit DAC.
- On-chip Real Time Clock, UART, SPI, SSP, I2C, PWM.
- On-chip 48 I/O Lines are provided in 40 pin Conn.
- On-board Reset Key.
- On-board ISP Programming

### UET-PIC PIC Piggy-bag Module

#### Feature

- CPU: Microchip 18F452 operating @ 4MHz.
- On-chip 32KB Flash memory and 1536 byte RAM.
- On-chip 256byte EEPROM.
- On-chip UART, SPI, I2C, PWM.
- On-chip 8 Channel 10 bit ADC
- On-chip 32 I/O Lines are provided in 40 pin Conn.
- On-board Reset Key.
- ISP Programming (**Optional**)

### UET-AVR AVR Piggy-bag Module

#### Feature

- CPU: Atmel ATmega32 operating @ 4MHz.
- On-chip 32KB Flash memory and 1KB RAM.
- On-chip 512byte EEPROM.
- On-chip UART, SPI, I2C, PWM.
- On-chip 8 Channel 10 bit ADC.
- On-chip 32 I/O Lines are provided in 40 pin Conn.
- On-board Reset Key.
- ISP Programming (**Optional**)

### UET-MCU 89CXX Piggy-bag Module

#### Feature

- CPU: Philips 89C61x2 operating @ 11.0592MHz.
- On-chip 64KB Flash memory and 1KB RAM.
- On-chip 32 I/O Lines are provided in 40 pin Conn.
- On-board Reset Key.
- On-board ISP Programming.

#### Optional Add-on Boards

- Stepper Motor Controller with Motor.
- Traffic Light Controller.
- 128x64 Graphic LCD Display.
- ISP Programmer for PIC & AVR.

Note: Specifications can be altered without notice in our constant efforts for improvement.