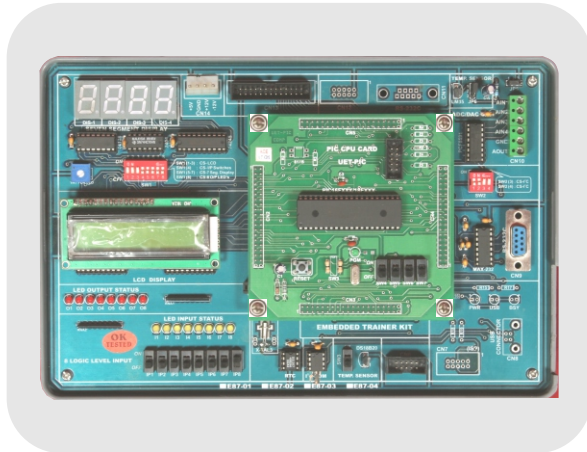


E87-01 MCU EMBEDDED TRAINER KIT



E87-01 is a single board Universal Embedded Kit based on MCU (Philips 89C61X2 / P89V51RD2) Microcontroller for any Embedded applications.

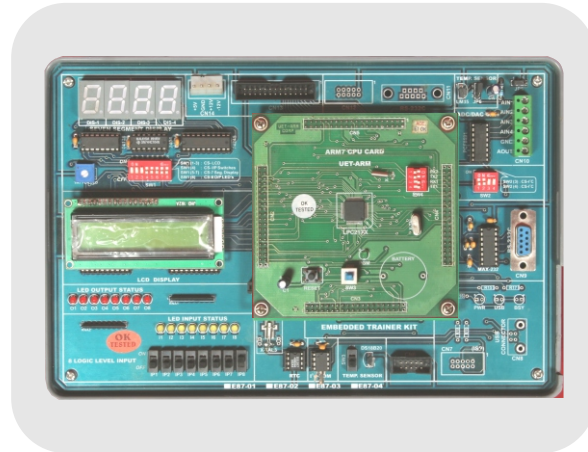
Feature

- ❖ CPU: Philips 89C61X2 / P89V51RD2 Microcontroller
- ❖ ISP Programming facility

Onboard Application

- ❖ 8 LEDs to display Digital Output
- ❖ 8 Switches to give Digital Input each indicated by LED
- ❖ 16*2 Alphanumeric LCD
- ❖ 4 digit Seven segment displays
- ❖ I²C compatible
 - 24C512 EEPROM (64KB)
 - DS1307 RTC with suitable battery
 - 4 Ch. 8bit ADC & 8 bit DAC using PCF8591
- ❖ Temperature sensor interface Lm35
- ❖ Temperature sensor interface DS18B20
- ❖ 24 I/O Lines Provided on a 26 pin FRC Connector for external interface
- ❖ On board supply +/- 12V, 5V is provided
- ❖ Supply Input Voltage: 230V AC
- ❖ Attractive ABS Plastic enclosures
- ❖ User's Manual with sample programs for all on board features

E87-02 ARM EMBEDDED TRAINER KIT



E87-02 is a single board Universal Embedded Kit based on ARM (Philips LPC2148 / LPC2378) Microcontroller for any Embedded applications.

Feature

- ❖ CPU: Philips LPC 2148 / LPC2378 Microcontroller
- ❖ ISP Programming facility

Onboard Application

- ❖ 8 LEDs to display Digital Output
- ❖ 8 Switches to give Digital Input each indicated by LED
- ❖ 16*2 Alphanumeric LCD
- ❖ 4 digit Seven segment displays
- ❖ I²C compatible
 - 24C512 EEPROM (64KB)
 - DS1307 RTC with suitable battery
 - 4 Ch. 8bit ADC & 8 bit DAC using PCF8591
- ❖ Temperature sensor interface Lm35
- ❖ Temperature sensor interface DS18B20
- ❖ 24 I/O Lines Provided on a 26 pin FRC Connector for external interface
- ❖ On board supply +/- 12V, 5V is provided
- ❖ Supply Input Voltage: 230V AC
- ❖ Attractive ABS Plastic enclosures
- ❖ User's Manual with sample programs for all on board features

Note : Specifications can be altered without notice in our constant efforts for improvement.